

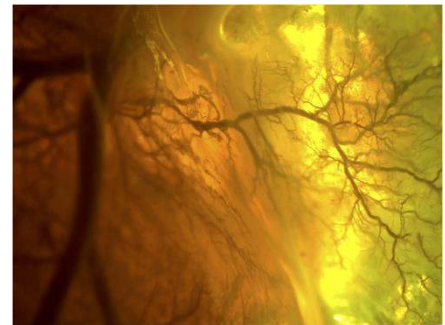
What is BE-OPTICAL?

BE-OPTICAL is a Marie-Skłodowska-Curie training network funded by the European Union aimed at providing a unique and structured training programme to 14 PhD students in a wide range of optical imaging technologies and signal processing tools.

The Challenges

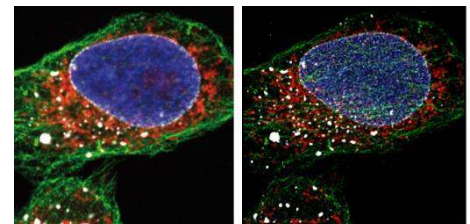
Biomedical imaging is a research field that is producing ground breaking scientific discoveries that have huge social and economic impact. Advances in this field require of specifically designed optical components and data analysis tools that enable the visualisation of structures and processes at different scales, from single cells to entire organs.

It is crucial to develop high-resolution cardiac imaging systems that allow understanding the mechanisms underlying cardiac arrhythmia, which is a most significant cause of mortality worldwide. Eye diseases strongly affect the quality of life of the aging world population, and it is essential to develop advanced optical instrumentation to improve early diagnosis and follow-up.



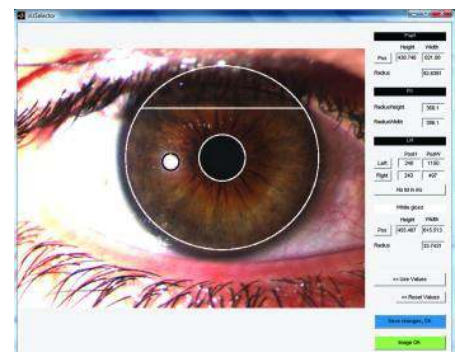
Training programme

The training programme will provide the students with a broad understanding of how state of the art of optical imaging technologies and data processing tools work. The students will also gain insight into clinical studies of novel imaging technologies and the commercialization process, which will open for them a wide range of job opportunities.



Who is involved?

The consortium includes seven leading academic groups, a leading company in fluorescence instrumentation and an internationally recognized ophthalmological clinic.



Our expertise

We are an interdisciplinary team of physicists, engineers and medical doctors, with complementary expertise in optical imaging, nanotechnology, computer science, complex systems and data analysis.



Contact us

Coordinator: Dr. Cristina Masoller
Universitat Politècnica de Catalunya

www.beoptical.eu